

# 2025 SUNDRIES GUIDE







# GUIDE CONTENTS

**Setting Material**      Page - 3-7

**Crack Isolation & Waterproofing**      Page - 8

**Primer & Floor Prep**      Page - 9-11

**Wall & Floor Board**      Page - 12

**Adhesives**      Page - 13

**Underlayment**      Page - 14-15

**Tile Installation Accessories**      Page - 16-17

**Carpet Installation**      Page - 18

**Protection**      Page - 19-20

# SETTING MATERIALS



## Modified Thinset

### KER 111 Modified Tile Mortar

Basic Tile Mortar with Polymer  
Ker 111 is a single-component, thin-set mortar for interior and exterior installations of stone, ceramic, porcelain and quarry tile. This mortar is formulated with a unique dry polymer, resulting in good adhesion to the substrate and tile.

Product	Size	Color	ITS Number	PALLET
KER 111 Modified	50lb	White	MATSTILEMORTARA50W	56 Bags
		Grey	NA	NA



## Non-Modified Thinset

### KERASET Non-Modified Tile Mortar

Professional Tile Mortar  
Keraset is a dry-set mortar for use in interior/exterior residential and light commercial floor and wall applications.

Product	Size	Color	ITS Number	PALLET
Keraset Non- Modified	50lb	White	MATSKERSET50W	56 Bags
		Grey	NA	NA



## Polymer Modified Thinset

### Keraflex SG Polymer Modified Tile Mortar

Standard, Extra Smooth, Large-and-Heavy-Tile Mortar with Polymer  
Keraflex SG is a standard-grade, versatile, large-and-heavy-tile mortar and thin-set mortar for tile and stone installations on floors, walls and countertops. It is formulated as non-sag for walls and non-slump for floors. Keraflex SG is a polymer-modified mortar formulated with Easy Glide Technology™ for ease of application and offers good adhesion to substrates and tile. It can also be used as a mortar over uncoupling, crack-isolation, sound-reduction and waterproofing membranes.

- High-Transfer Technology™ for superior mortar-wetting properties
- Extra smooth, creamy consistency for ease of application
- Easy mixing, handling and troweling properties
- Ideal for edge-leveling clip applications
- Non-sag formula for large-format and heavy tile/stone in wall applications
- Non-slump formula for large-format and heavy tile/stone in floor applications
- For bond coats up to 1/2" (12 mm) in embedded thickness
- Polymer-enriched for good performance
- For use over plywood and a variety of membrane

Product	Size	Color	ITS Number	PALLET
KeraFlex SG Poly Modified	44lb	White	MATSKERFLEXSG44W	56 Bags
		Grey	NA	NA

# SETTING MATERIALS



## Thinset

### Glass Block Mortar

Pre-Blended Mortar for Glass-Block Installations  
Glass-Block Mortar is a factory-prepared blend of Portland cement, sand and chemicals specifically designed for glass-block installation. This white mortar can be used for both setting of the blocks and tooling of the block joints.

Product	Size	Color	ITS Number	PALLET
Glass Block Mortar	50lb	White	MAGBM50	56 Bags
		Grey	NA	NA



## Polymer Modified Thinset

### Ultralite Polymer Modified Tile Mortar

MAPEI Ultralite Mortar is a premium-grade, lightweight, single-component mortar for large-and-heavy-tile and non-sag applications, and that can also be used for thin-set mortar installations. This high-performance, polymer-modified mortar features a very low emission of volatile organic compounds and includes an offset of greenhouse gas emissions. It is formulated with Easy Glide Technology™ for ease of application with Universal Color Formula™ for installing light-colored stones and translucent marble and with BioBlock® technology for mold and mildew resistance. MAPEI Ultralite Mortar utilizes Ultralite Technology™ for twice the coverage of a standard thin-set mortar per pound/kg and contains more than 20% recycled content.

- Polymer-enriched for high performance and deformability
- Non-sag formula for large and heavy tile/stone
- Non-slump for large and heavy tile/stone in floor applications
- A 25-lb. (11.3-kg) bag provides the same coverage as a 50-lb. (22.7-kg) bag of a standard polymer-modified mortar
- Smooth and creamy consistency
- No silica sand added\*
- Suitable for installations of opaque glass tile 36" x 3" (0.91 m x 7.5 cm) and smaller
- For thicker bond coats from 3/32" to 1/2" (2.5 to 12 mm)

Product	Size	Color	ITS Number	PALLET
Ultralite Poly Modified	25lb	Neutral	MATSLIGHT25N	56 Bags
		Grey	NA	NA

# SETTING MATERIALS



## Grout

### Ultracolor Plus FA Grout

Rapid-Setting, “All-in-One” Grout Replacement for Sanded and Unsanded Grouts

Ultracolor Plus FA – with Drop Effect technology and CO<sub>2</sub> emissions fully offset in the product's life cycle – is an ultra premium, fine-aggregate, fast-setting, polymer-modified, color-consistent, non-shrinking, efflorescence-free grout for joint widths from 1/16" to 3/4" (1.5 to 19 mm). Drop Effect reduces surface absorption. to help repel water, dirt and grime from penetrating grout joints. Ultracolor Plus FA is specially formulated with MAPEI's High-Hydrated Cement Technology (HCT) to eliminate common problems such as color consistency and efflorescence. Along with offering higher polymer content, HCT reduces absorption and increases stain resistance when compared with standard-performance cement grouts.

Product	Size	Color	ITS Number	PALLET
Ultracolor Plus FA Grout	25lb	Varies	NA	80 Bags



## Grout

### CBP Prism Grout

Prism® Ultimate Performance Grout sets a new standard in cement based grout technology. Prism's calcium Aluminate cement based, latex polymer-modified formula offers consistent color with no shading regardless of tile type, temperature or humidity, and it will not effloresce. The rapid setting formula results in high early strength and dense grout joints up to 1/2". A unique blend of lightweight recycled glass and fine aggregate sand allows for a smooth consistency that is easy to spread and clean.

- Uniform consistent color
- Won't mottle or shade regardless of tile type, temperature or humidity
- No efflorescence
- Lightweight for superior handling
- Fast setting, walkable in four hours
- No sealer required

Product	Size	Color	ITS Number	PALLET
Prism Grout	17lb	Varies	NA	2-8.5# Bags/Case
				90 Cases/Pallet



# SETTING MATERIALS



## Caulk

### ELITE Hybrid Polymer Sealant Caulk

ELITE Caulk by ITS is a multi-purpose, siliconized acrylic latex caulk for interior and exterior use. This easy-to-use formula dries quickly and cleans up with water. It offers great weather-resistance, has a water resistant seal once cured, tools easily and can be painted in 2 hours. It offers unbeatable adhesion to most common building materials. Warranty- 50 years and made in the USA.

- Super Fast curing
- No sagging or slumping
- Non-staining; non-yellowing
- Outstanding adhesion & bond strength
- Permanently flexible
- UV resistant, fade resistant
- Resistant to mold and mildew
- Easy to work with, smooth every time
- Interior or exterior installations
- Cleans up with water, no chemicals needed
- Available in multiple matching grout colors
- ASTM C920 Type S Grade NS, Class 25
- ASTM C834 Type OP, Grade -18c.

Product	Size	ITS Number	Case and Pallet
Elite Caulk	10.3oz.		6 Tubes/Case



## Caulk

### Inner Bond C911- 100% Silicone Caulk

- It cures to Silicone rubber and adheres to glass, wood, metal, porcelain, ceramic, painted surfaces, fiberglass, many plastics & rubber
- Permanently flexible -60°F to 450°F
- Insulates thermally and electrically
- Waterproof and weatherproof seal
- Comes in #01-White
- Quantity: 10.1 oz

Product	Size	ITS Number	Case and Pallet
Silicone Caulk	10.1oz.	IBSILI	12 Tubes/Case

# SETTING MATERIALS



## Stain

### Aqua Mix Grout Colorant Stain

An easy-to-use, professional grade waterborne epoxy that recolors, seals and rejuvenates dirty or discolored existing grout joints. Use with a variety of grout types, including cement, epoxy, urethane and Single Component® grouts. Also simplifies ongoing grout cleaning by helping to guard against stains by sealing and protecting recolored grout. Includes Microban® antimicrobial protection that prevents the growth of stain-causing mold and mildew on cured colorant.

Product	Size	ITS Number	Case and Pallet
Grout Stain	8.0oz.		4 Bottles/Case



## Wall Tile Adhesive

### Mapei KER 909 Tile Adhesive

Ker 909 is a ready-to-use, nonflammable, high-viscosity, synthetic polymer emulsion-based adhesive. Ker 909 is used for residential and light commercial interior installations of wall tiles up to 8" x 8" (20 x 20 cm), and interior residential floor and countertop tile up to 6" x 6" (15 x 15 cm). Ker 909 also has a minimal odor, making it ideal for tile installations in confined or restricted areas.

Product	Size	ITS Number	PALLET
KER 909	3.5 Gallon	MAMASTNA20003.5	42 Buckets

# CRACK ISOLATION AND WATERPROOFING



## Crack Isolation & Waterproofing

### Mapelastic WaterStop

Mapelastic WaterStop is a flexible, thin, fast-drying, one-component, liquid-rubber waterproofing and crack-isolation membrane for installation under ceramic tile or stone in residential, commercial and industrial environments. It provides a continuous barrier to protect adjacent floors and rooms below from water damage. Mapelastic WaterStop also prevents in-plane floor cracks (up to 1/8" [3 mm]) from transmitting through tile or stone. In problem areas such as coves, corners, cracks and drains, it can be combined with MAPEI's optional Reinforcing Fabric or Mapeband accessories (cove roll and drain flashing) to provide additional protection.

Product	Size	ITS Number	PALLET
WaterStop	1 Gallon	MAMAPELASTICWATER1GAL	64 buckets
	3.5 Gallon	MAMAPELASTICWATER3.5GAL	42 Buckets



## Crack Isolation & Waterproofing

### CBP Redgard

The #1 trusted and reliable liquid-applied waterproofing membrane for your go-to commercial and residential tile and stone applications. It creates a waterproof membrane barrier and reduces crack transmission for use on both interior and exterior substrates. It bonds directly to clean metal drains, PVC, stainless steel, and ABS drain assemblies. It can be used as a slab-on-grade moisture vapor barrier under all types of floor coverings.

- Ready to use to roll on; Quick dry formula
- Listed with IAPMO for use as a shower pan liner
- Extra heavy-duty rated for steam shower use

Product	Size	ITS Number	PALLET
Redgard	1 Gallon		64 buckets
	3.5 Gallon	CBREDGARD3.5	42 Buckets



## Crack Isolation- Roll On

### Mapelastic CI- Liquid Crack Isolation

Mapelastic CI is a premixed, liquid-rubber, quick-drying crack-isolation membrane for installation under ceramic tile or stone in residential and commercial interior and exterior environments. Mapelastic CI meets ANSI A118.12 requirements and prevents nonstructural, in-plane floor cracks up to 1/8" (3 mm) from transferring through grout, ceramic tile and stone. Once it has dried after about 30 to 50 minutes, Mapelastic CI is ready to receive most MAPEI polymer-modified or epoxy mortars.

Product	Size	ITS Number	PALLET
Mapelastic CI	3.5 Gallon	MAMAPELASTICCI3.5GAL	42 Buckets



# PRIMER & FLOOR PREP



## Primer

### Mapei SM Primer Fast

MAPEI SM Primer Fast is a ready-to-use, fast-drying, quick-tacking, water-based, pressure-sensitive, nonhydrolyzable latex primer for use under MAPEI's peel-and-stick sheet membranes on residential and commercial indoor or outdoor floors. MAPEI SM Primer Fast greatly increases the bond of MAPEI's peel-and-stick sheet membranes to concrete, plywood and other approved, properly prepared floors. It can be applied with a roller or brush, is white in color and dries clear.

- Fully compatible with MAPEI's peel-and-stick sheet membranes
- Easy to apply with roller or brush
- High coverage rate, for economical installation
- Fast-drying, allowing sheet membrane installation after about 15 minutes
- Dries clear, so that layout lines remain visible after application
- Bonds to a variety of substrates

Product	Size	ITS Number	Case/Pallet
SM Primer Fast	1.0gal.	MASMPRIMERFASTIGAI	4 Jug/case (36 case/pal)



## Primer

### Mapei Primer T

All-Purpose Primer for Self-Leveling Underlayments

Primer T is a low-VOC, magenta-colored, water-based acrylic primer that enhances the performance and adhesion of self-leveling underlayments (SLUs) on nonporous and porous substrates. Suitable for a wide variety of substrates, Primer T combines excellent versatility with easy, low-odor application.

- One-component, versatile primer for a wide variety of substrate conditions
- Single-coat application for faster turnaround and lower installation costs
- Easy handling and application
- Magenta-colored for easier coverage control

Product	Size	ITS Number	Pallet
Primer T	2.0gal.	MAPRIMERT2GAL	36 Jugs

# PRIMER & FLOOR PREP



## Self-Leveling Underlayment

### Ultraplan Easy Self-Leveler

ULTRAPLAN is a self-levelling smoothing compound used in interiors for levelling and smoothing differences in thicknesses from 1 to 10 mm on new or existing substrates, preparing them to receive all kind of floorings.

#### ADVANTAGES:

- Application thickness from 1-10 mm per coat
- Application up to 20 mm if blended with quartz
- Suitable for hand or pump application
- Excellent self-levelling properties
- Excellent surface finish
- High bonding strength to the substrate
- High compressive and flexural strength
- High abrasion resistance
- Ultra-quick hardening
- Lay ceramic after 3 hours and resilient and wood after 12 hours
- Exposure to castor wheels in accordance with EN 12529
- EMICODE EC1 Plus (very low emissions)

Product	Size	ITS Number	PALLET
Ultraplan	50lb	MAULTRAPLANEASY50	56 Bags



## Floor Patch

### Mapei Planipatch Rapid Set 25

Planipatch is an ultra fast-drying, self-curing, polymer-modified, cement-based patching compound that rapidly develops high compressive strength. When Planipatch is mixed with Planipatch Plus, the Planipatch Plus System can be used as an embossing leveler or as a patch to fill voids over properly prepared vinyl sheet goods, vinyl composition tile (VCT) and cement terrazzo before the direct glue-down installation of floor coverings.

Product	Size	ITS Number	PALLET
Planipatch	25lb	MAQUICKPATCH25	100 Bags



## Floor Patch

### Mapecem Quickpatch

Mapecem Quickpatch is a high-performance, fast-setting, cementitious material used for the patching of concrete surfaces. This product features a very low emission of volatile organic compounds and includes an offset of greenhouse gas emissions.

Product	Size	ITS Number	PALLET
Mapecem Quickpatch	50lb	MAMAPECEM50	56 Bags

# PRIMER & FLOOR PREP



## Skim Coat

### Mapei Planiprep SC

Planiprep SC is a high-performance, polymer-modified, fiber-reinforced cement-based skim coating and patching compound. Use Planiprep SC to skimcoat and smooth minor surface variations and defects on common substrates. Planiprep SC creates a strong, durable surface ready for almost any floor application. Its unique formulation mixes easily with water and produces an easy-to-apply patching compound. Rapid-setting Planiprep SC allows for fast-track flooring installations in 30 to 60 minutes after application, depending on thickness and environmental conditions.

- Mixes to a smooth, easily applied consistency
- Creamy smooth texture trowels easily to create a defect-free surface.
- Provides a suitable surface for applying floor-covering adhesives over
- Rapid-set: Typically ready for floor-covering installation in 30 to 60 minutes
- Applies from featheredge up to 1" (2.5 cm)

Product	Size	ITS Number	CASE/ PALLET
Planiprep SC	10lb	MASKIMCOAT10	2 Bags/Case (48 Cases/Pallet)



## Floor Mud

### Mapei 4-to-1 Mud Bed Mix

4 to 1 is a pre-blended mixture of finely graded sand and Portland cement used for thick-bed mortar installations. 4 to 1 flattens and levels an existing substrate before the installation of tile and stone.

Product	Size	ITS Number	CASE/ PALLET
Planiprep SC	10lb	MASKIMCOAT10	2 Bags/Case (48 Cases/Pallet)



# WALL & FLOOR BOARD



## BackerBoard

### PermaBase UltraBacker Cement Board

PermaBASE UltraBacker® Cement Board features a smooth mesh and mat surface that creates a more rigid and easier to handle product and an improved surface providing superior tile bond. It is ideally suited as an underlayment for ceramic tile on floors, countertops, tub decks, and outdoor kitchen counters.

- A cement backer board is perfect for use in interior applications such as kitchen counters and as an underlayment for ceramic tiles.
- Highly moisture-resistant, will not rot, disintegrate or swell when exposed to water.
- The 1/4-in thickness eliminates the need to modify adjacent thresholds when abutting to carpet, wood floors.

Product	Size	ITS Number	PALLET
UltraBacker	1/4" - 3'x5'x.25"	NGPERMABASE1/4	60 Sheets



## BackerBoard

### PermaBase Plus Cement Board

PermaBASE PLUS® Cement Board has the same qualities built into PermaBASE® Cement Board but weighs 15% less. When you need to lighten your load, consider PermaBASE PLUS for both interior and exterior applications.

- Moisture & Mold Resistant
- Easier Cut & Faster Install
- Smoother Surface / Stronger Bond
- EdgeTech® Reinforced Edge

Product	Size	ITS Number	PALLET
PermaBase Plus	1/2" - 3'x5'x 7/16"	NGPERMABASEPLUS1/2	50 Sheets



## TAPE

### Fiberglass Mesh Tape- Self Adhesive

This glass fiber, pressure sensitive adhesive interior tape reinforces cement board joints to provide a strong, continuous surface in applications over walls, floors and counter tops. Is alkali resistant.

Product	Size	ITS Number	CASE
Fiberglass Tape	2" x 300'	SSMESHTAPE2300	24 Roll/Case

ADHESIVES



Vinyl Pressure Sensitive Adhesive

Mapei Ultrabond ECO 399 PSA

Ultrabond ECO 399 is a high-moisture-resistant, heavy-rolling-load-resistant, aggressive, pressure-sensitive adhesive with enhanced dimensional control properties designed to install a wide variety of resilient flooring types. Ultrabond ECO 399 can also be used for flash-coving installations using traditional installation methods.

Product	Size	ITS Number	PALLET
Ultrabond Eco 399	4 Gallon	MAULTRABONDECO3991GAL	48 Buckets
Ultrabond Eco 399	4 Gallon	MAULTRABONDECO3994GAL	48 Buckets



Urethane Wood Adhesive

Mapei Ultrabond ECO 977 Urethane

Ultrabond ECO 977 is a fast-setting, 100%-solids, one-component, moisture-cured urethane adhesive specifically designed for the installation of domestic solid and engineered wood flooring. Ultrabond ECO 977 can also be used in elevated subfloor moisture conditions of up to 12 lbs. (5.44 kg) MVER and 95% relative humidity when a specific installation method and trowel notch configurations are used.

Product	Size	ITS Number	PALLET
Ultrabond Eco 977	4 Gallon	MAULTRABONDECO9774GAL	36 Buckets



Modified Silane Wood Adhesive

Mapei Ultrabond ECO 985 Mod-Silane

Ultrabond ECO 985 is MAPEI's premium single-component, hybrid-polymer-based wood-flooring adhesive that is formulated without water, solvents, amines, isocyanates, phthalate plasticizers or epoxy resins, and has an extremely low emission level of volatile organic compounds (VOCs). Ultrabond ECO 985's formulation provides excellent sound-reduction properties that are required for multi-unit housing. Ultrabond ECO 985 is also a moisture-controlling wood-flooring adhesive that protects wood flooring from moisture vapor emitting through concrete slabs in a single application.

Product	Size	ITS Number	PALLET
Ultrabond Eco 985	4 Gallon	MAULTRABONDECO9854GAL	48 Buckets

# UNDERLAYMENT



## Moisture Barrier

### AquaShield 6MIL POLY FILM

For use over concrete substrates on all grade levels. Includes self-sealing tape at seams for easy installation.

Product	Size	ITS Number	PALLET
6mil Poly Film	10' x 12' (120SF)	ITS6MILPOLYFILM1012	Roll

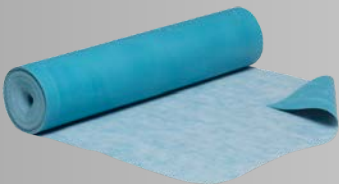


## Laminate/LVP/Hardwood Underlayment

### ITS Quiet Underlayment

Sonic isolation underlayment designed to provide superior sound abatement. Perfect for residential or commercial projects that have medium to heavy foot traffic. Made for floating laminate, wood, and vinyl flooring.

Product	Size	ITS Number	PALLET
Quiet Underlayment	3' x 66.67' (200SF)	FSITSQUIET200	Roll



## Sound Abatement Underlayment

### Reverb Noise Control Underlayment

- Material Composition: Rubber w/ Recycled Tire Crumb
- Residential & Commercial applications
- Antimicrobial Protection
- Approved for use under LVT/LVP, Laminate, Engineered wood, Hardwood, Carpet Tile
- Approved Substrates: Cement Backer Units, Completely Cured Concrete, Gypcrete, Interior Plywood, OSB (Skim Coat May Be Required)
- Also available with attached moisture control film
- Tested up to 98%RH as a class II vapor barrier
- WVTR 1.7 perms
- Lip and tape system optional

Product	Size	ITS Number	PALLET
Reverb	200SF		Roll



# UNDERLAYMENT



## Tile/Stone/Wood Underlayment

### Mapeguard 2 CISM

Mapeguard 2 is a next-generation, flexible, thin, 40-mil (1-mm) lightweight, load-bearing, fabric-reinforced “peel-and-stick” crack-isolation, waterproofing and vapor-control membrane. Mapeguard 2 helps to prevent existing or future in-plane floor cracks (with movement up to 3/8" [10 mm] wide) from transmitting through grout, ceramic tile and natural stone. It also reduces the transmission of impact sound (footsteps, dropped objects, etc.) and airborne sound (voice, TV, etc.) through floors when installed under ceramic tile, stone or wood floor coverings.

Product	Size	ITS Number	PALLET
Mapeguard 2	225SF	MAMAPEGUARD240	23 Rolls



## Ceramic Tile & Stone Underlayment

### Mapeguard UM

Mapeguard UM is a premium-performance, lightweight, waterproofing and vapor-pressure-equalizing underlayment membrane that provides crack suppression for use under ceramic tile and stone installations, for both residential and commercial applications. It is designed to perform over challenging substrates, such as young concrete and single-layer 3/4" (19 mm) plywood subfloors with joist spacing of up to 19.2" (49 cm) on center or up to 24" (61 cm) on center with double-layer plywood subfloors. The unique engineered tri-layered design of Mapeguard UM absorbs lateral stress from the substrate without transferring this force to the tile or stone, which maintains exceptional bonds.

Product	Size	ITS Number	PALLET
Mapeguard UM	323SF	MAMAEGUARDUM	20 Rolls



## Ceramic Tile & Stone Underlayment

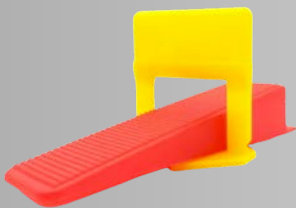
### Mapesound 90

Mapesound 90 is a flexible, thin, 90-mil, lightweight, load-bearing, fabric-reinforced “peel-and-stick” sound-reduction and crack-isolation membrane. After application, ceramic tile or stone can be installed immediately with a recommended MAPEI polymer-modified cement-based mortar, or glue-down wood flooring can be immediately installed with any MAPEI urethane or hybrid-polymer-based wood adhesive.

Mapesound 90 reduces transmission of impact sound (footsteps, dropped objects, etc.) and airborne sound (voice, TV, etc.) through floors when installed under ceramic tile, stone or wood floor coverings. It also helps to prevent existing or future in-plane floor cracks (with movement up to 3/8" [10 mm] wide) from transmitting through grout, ceramic tile or natural-stone assemblies.

Product	Size	ITS Number	PALLET
Mapesound 90	115SF	MAMAPESONIC90	20 Rolls

# TILE INSTALLATION ACCESSORIES



## Spacers

### Leveling Wedges and Spacers

The Wedge has a broad rounded ergonomic back for ease of use, eliminating the need for tightening tools. The Wedge will not crack or break when hit and will last for many repeated uses. Great tools can be used for both wall and floor tile. The system ensures flatness between tiles avoiding movements during the mortar setting.

Product	Size	Type	ITS Number	PCS/Bag
Spacers		Leveling Space Wedge	TLSPACERLEVELWEDGE	100
	1/16"	Leveling Spacer Clip	TLSPACERLEVELCLIP116	100
	1/8"	Leveling Spacer Clip	TLSPACERLEVELCLIP18	100
	3/16"	Leveling Spacer Clip	TLSPACERLEVELCLIP316	100



## Sponges

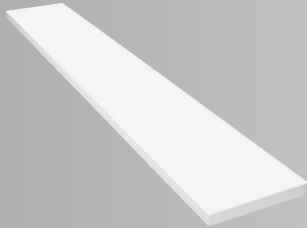
### ITS Grout Sponge

The ITS Grout Sponge is a premium, heavy-duty, double-cell polyurethane foam sponge designed specifically for the optimized cleanup of today's specially formulated grouts. The unique cell structure delivers superior strength, durability, and firmness to increase performance in grout and grout haze collection with each pass during installation cleanup.

- Fine double-cell polyurethane foam
- Varied cell structure for strength and rigidity
- Denser foam for increased water holding capacity
- Square edges for working corners & less streaking between passes
- Wipes and rinses grout faster than traditional grout sponges

Product	Size	ITS Number	Case & Pallet
Grout Sponge	7.4"x4"		120/Case - 2,400/Pallet

# TILE INSTALLATION ACCESSORIES



## Solid Surface Sills

### Corian White Solid Surface

Corian Solid Surface is perfect window sills, shower shelves, and backsplashes. These sills can be perfectly integrated to create the illusion of a single, solid surface. There's one solid surface that gives you the ultimate in freedom of expression and choice, in your kitchen, your bath, and throughout your home

Product	Size	ITS Number	PALLET
Corian White Solid Surface	4"x 144" x 1/2"	SCELUWHIT4144	Piece
	5"x 144" x 1/2"	SCELUWHIT5144	Piece
	6"x 144" x 1/2"	SCELUWHIT6144	Piece



## Trim

### Primed White Quarter Round

ITS Primed White Quarter Round measures at 11/16 in. x 11/16 in. x 16". Quarter Round makes a great transition between base molding and flooring. Quarter Round can also be used to cover gaps where flooring surfaces meet base molding. Quarter round is also used to cover small alignment challenges where hard surface flooring meets the wall.

- Smooth, consistent surface is free from knots and is ready to finish
- Can be painted with any high quality latex based paint
- Classic small profile molding useful in covering small gaps
- Can also be used to accent shelving, cabinets or any other interior elements
- Installs with common woodworking tools

Product	Size	ITS Number	PALLET
Quarter Round Primed	11/16"x11/16"x16'	MBQUARTERROUND11/16x11/16x16PRIMED	Piece



# CARPET INSTALLATION

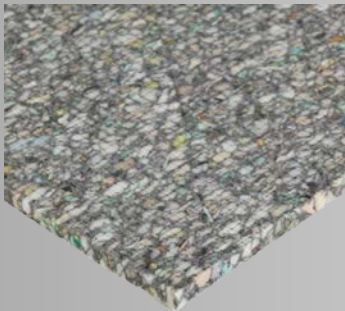


## Tack Strip

### Concrete & Wood Tack Strip

Premier carpet tack strip is made from premium poplar plywood with quality high carbon hardened steel anchoring nails for superior strength. The rugged 5-ply construction prevents the pins from bending or becoming loose, ensuring a long-lasting professional installation. Meets or exceeds CR-104 and CR-105 standards.

Product	Size	ITS Number	PALLET
Concrete Tack Strip	11/16" -48" Strips	MAULTRABONDECO3991GAL	100 pcs per box- 36 boxes/pallet
Wood Tack Strip	3/4"-48" Strips	MAULTRABONDECO3994GAL	100 pcs per box- 36 boxes/pallet



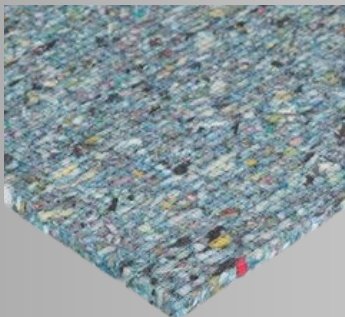
## Carpet Pad

### ITS Black 6# Carpet Pad

ITS carpet cushion is a quality option for placing underneath residential carpet. It is designed with bonded foam to extend carpet life.

- Extends the life of carpet and makes it more comfortable
- Hypoallergenic and CRI Green Label Plus-certified for indoor air quality
- 100% recycled construction, 100% recyclable, and contributes toward achieving LEED® building credits
- Insulates home and reduces noise
- Includes warranty

Product	Size	ITS Number	Truckload
Black 6#- 7/16" Pad	30sy/roll	LPBLACK7/16	326 Rolls



## Carpet Pad

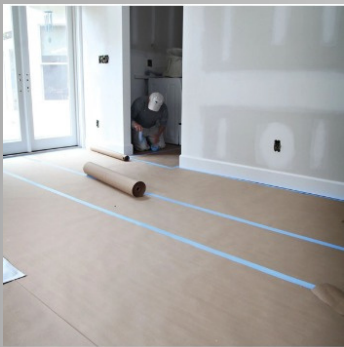
### ITS Blue 8# Carpet Pad

ITS carpet cushion features bonded foam that helps extend the life of residential carpets while increasing comfort and insulation. Blue is hypoallergenic and works to reduce noise in the room.

- Extends the life of carpet and makes it more comfortable
- Hypoallergenic and CRI Green Label Plus-certified for indoor air quality
- 100% recycled construction, 100% recyclable, and contributes toward achieving LEED® building credits
- Insulates home and reduces noise
- Includes warranty

Product	Size	ITS Number	Truckload
Blue 8#- 1/2" Pad	30sy/roll	LPBLUE1/2	420 Rolls

# Protection



## Floor Paper

### Easy Mask Builder Paper

This economical, floor protection paper is large enough for several projects, flexible and easy to use. A great alternative to traditional red rosin paper, it helps protect floors and surfaces from small paint spills and splatters.

Product	Size	ITS Number	PALLET
Easy Mask Builder Paper	35"x140'	SSPAPER	100 Rolls



## Floor Paper

### Watershield Builder Paper

Water resistant paper is reinforced nylon scrim for extra strength and longevity on the job. Like the name says, Water Shield will protect surfaces from minor spills, so you can focus on the job at hand. Specialty paper protects a wide range of surfaces including hardwoods, ceramic tile, travertine, marble and more.

Product	Size	Material Number	PALLET
Watershield	24"x100'	SSWATERSHIELD	44 Rolls



## Floor Paper

### Builder Board Project Paper Heavy Duty

This protective floor board is 2.5X thicker than builders paper and is reusable making it the ideal choice of temporary floor protection for residential or smaller commercial work. It rolls out easily, lays flat and allows vapors to escape while defending against spills. Perfect for protecting floor types such as, hardwood floors, tile floors, linoleum floors, laminate floors, vinyl floors, concrete floors, and more.

Product	Size	ITS Number	PALLET
Builder Board Paper	35"x100'	SSBUILDERBOARDPE	36 Rolls



## Tape

### Premium Grade Blue Tape

All Purpose Blue Tape is a multi-surface tape made with medium adhesion that won't leave a residue on wood floors, baseboards, drywall, or other surfaces. It removes cleanly up to 14 days after application, and is UV-resistant when exposed to indirect and direct sunlight. Made with an extra heavy duty paper, it's the toughest all purpose painter's tape on the market.

Product	Size	Material Number	Case
Blue Tape	2"x180'	SSTAPE260	24 Rolls

# Protection



## Clear Plastic

### Clear Plastic 3MIL

Clear Construction And Agricultural Plastic Sheeting 12 ft. x 100 ft. Poly Sheeting Clear 3 Mil can be used inside or outside to cover, protect, separate or moisture-proof. Poly Sheeting is excellent for vapor barriers, drop cloth, temporary walls, weather-proofing, covering fresh concrete and under mulch in landscaping.

Product	Size	ITS Number	PALLET
Clear Plastic 3MIL	12'x1200'	IPCLEARFILM12100	50 Rolls



## Clear Plastic

### Carpet Protective Film 3MIL

Ideal for construction, renovations, moving, parties, showing model homes and open houses, and in-home service visits. Our Carpet Protection Film is created as a temporary solution to protect carpets from dirt, mud, paint spills, dust, construction debris, and damage. The film should be used with synthetic carpets only and should not be used with natural fiber rugs. The Carpet Protection Film can be applied with a floor roller or by hand. To remove it, simply pull the film back from the edge of the carpet. This product should not be used in high-humidity conditions or in outdoor applications. Perforated: No

Product	Size	Material Number	PALLET
Carpet Film	24'x200'	PTCARPETFILM2420	100 Rolls





# SUNDRIES GUIDE



VISIT US

[WWW.ITSYOURSOURCE.COM](http://WWW.ITSYOURSOURCE.COM)



CUSTOMER SUPPORT

(386) 253-1112  
[SUPPORT@ITSYOURSOURCE.COM](mailto:SUPPORT@ITSYOURSOURCE.COM)

CORPORATE OFFICE

1170 S. WILLIAMSON BLD.  
DAYTONA BEACH, FL 32114